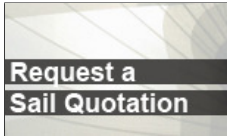




-
-
-
-
-



Mainsail Measurement Form



Personal & Boat Information

Name: Phone #: Boat: Year: Hull #:

E-mail:

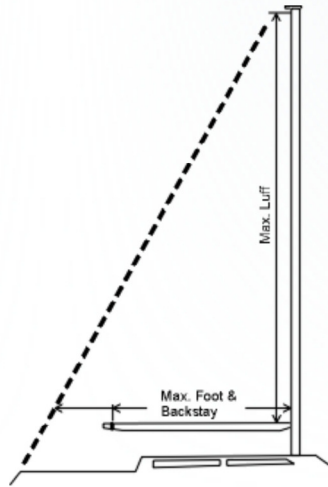
Main Measurements

Max Luff- Fully hoist a tape measure on your main halyard until its stops (to the sheave). Then measure straight down to top of the boom and record this measurement.

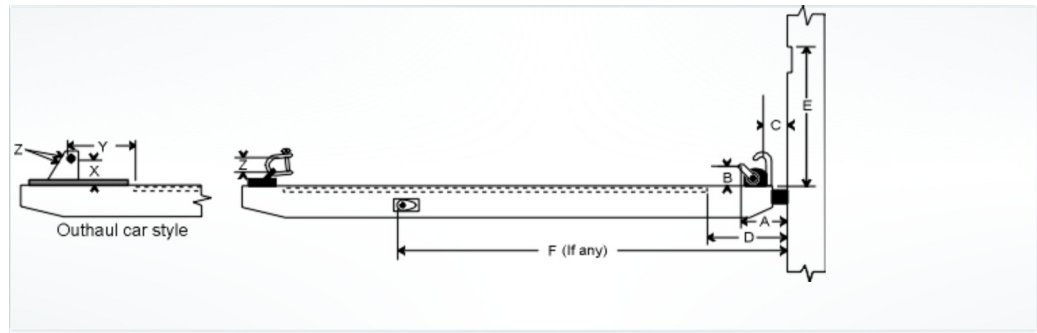
Leech- (*If you need to clear a bimini, dodger or boom gallows.) With the halyard fully at max hoist and the boom set at a height that clears the bimini, dodger or gallows, measure to the top of the boom with the outhaul mechanism in max aft setting.

Maximum Foot- Mainsail maximum foot length is measured from the aft face of the mast to the tightest / longest outhaul setting. If the boom has a black measurement band, measure to the inside of the band and record "band".

Backstay- Aft face of mast, along the TOP of the boom, to the backstay. A horizontal measurement at boom level. This measurement helps us design the optimal roach for your sail.



<input type="text"/>	A - Aft face of mast to bearing point of tack fitting
<input type="text"/>	B - Top of boom to bearing point of tack fitting.
<input type="text"/>	C - Aft face of mast to bearing point of reef hook.
<input type="text"/>	D - Aft face of mast to end of groove or track.
<input type="text"/>	E - Top of the luff groove or track to top of boom
<input type="text"/>	F - From back of the mast to reefing block or padeye.

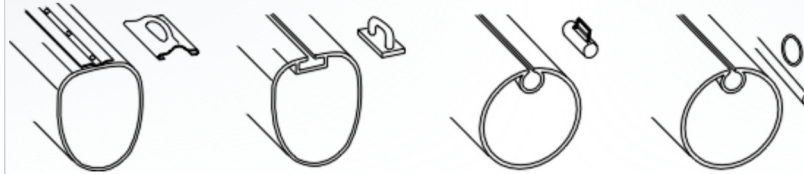


Outhaul Car

Outhaul Car? Yes No

	X- If outhaul car: From bearing point of the pin on outhaul car to the top of the boom.
	Y- If outhaul car on separate track: Place car in farthest aft position and measure forward to aft end of sail track/ groove
	Z- Width of shackle jaw or clew attachment mechanism

Slides, Slugs, Rope



External Slides		Internal Slides		Internal Slugs		Bolt Rope	
Luff	Foot	Luff	Foot	Luff	Foot	Luff	Foot
5/8"	5/8"	5/8"	5/8"	1/4"	1/4"	5/16"	5/16"
7/8"	7/8"	3/4"	3/4"	5/16"	5/16"	3/8"	3/8"
1"	1"	7/8"	7/8"	3/8"	3/8"	7/16"	7/16"
None	None	None	None	7/16"	7/16"	1/2"	1/2"
				1/2"	1/2"	None	None
				None	None		

Comments or Notes

Submit Reset

